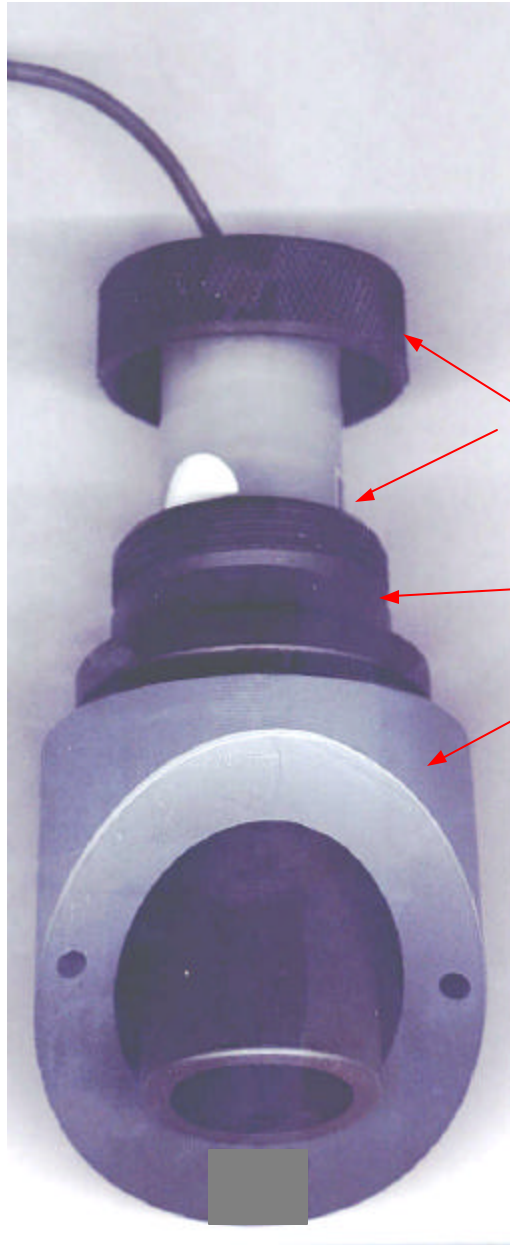


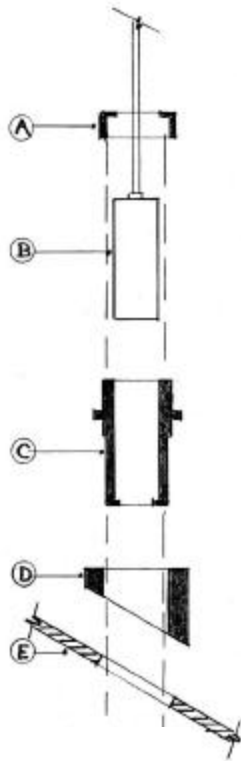
STX-PA sensor cell connected to 4" exhaust duct



STX-PA  
sensor cell  
slides into  
bulkhead

Bulkhead mount  
assembly  
P/N 630200-4DV

See Below for  
mounting  
instructions



↖ Air Flow

### Installation Instructions

**Note:** The bulkhead holder is designed to mount the sensor cell on a vertical duct positioned at a 45° angle from vertical.

- 1) Cut a 2" hole in the duct wall, [E]
- 2) Mount Bulkhead mounting flange [D] to the duct wall with self tapping screws.
- 3) Insert sensor cell holder [C] into the Bulkhead mounting flange [D] and fasten completely into the flange.
- 4) Insert the cell holder into the flange and slide the sensor cell [B] into the cell holder. Fasten the Bulkhead End Cap [A] to the cell holder [C]

### KEY TO DRAWING

A	Bulkhead End Cap (Screw connection to Bulkhead Body section)
B	Gas Sensor Cell (Slip fit into Bulkhead Body section)
C	Sensor cell holder (Threaded two places to accommodate other parts of assembly)
D	Bulkhead Mounting Flange (Bolts to the exterior of the ducting, and threaded attachment to Bulkhead Body)
E	Duct Wall – not more than 0.375 inches thick

### PureAire Monitoring Systems, Inc.

557 Capital Drive  
 Phone 847-726-6000 Fax: 847-726-6051  
 Email: PureAire@dls.net

Bulkhead Mount Vertical for Gas Cabinet and VMB

DATE: Aug 24, 2001

SCALE: None